

SmartBevel™ Technology

The complete, integrated solution for automated plasma bevel cutting.



SmartBevel Technology makes bevel cutting easier.

SmartBevel™ Technology from ESAB is a complete solution for easier bevel programming and operation, enabling accurate bevel cutting with less operator intervention. ESAB SmartBevel Technology seamlessly integrates your plasma, CNC, software, height control, bevel head, and gantry – so you can take full advantage of your machine and maximize productivity.

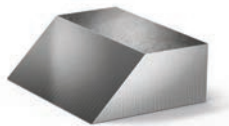
Smart Bevel delivers a high level of automation and dramatically reduces the need for trial-and-error programming. Best practice bevel cut sequences are integrated into the software, making setting up a new job quick and more predictable. Achieving an accurate bevel cut on the first attempt reduces multiple test runs and re-programming, minimizing unproductive labor time and scrap.

Industry

- Steel Service Centers
- Industrial and General Fabrication
- General Manufacturing

- Simplifies and streamlines job setup
- Improves accuracy and quality consistency
- Provides bevel cuts in accordance with AWS D1.1

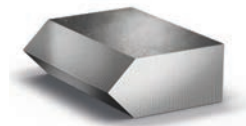
Visit esab.com for more information.



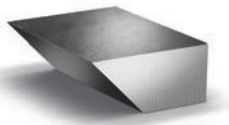
V-Bevel Top



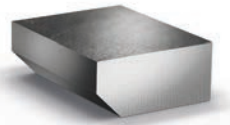
Y-Bevel Top



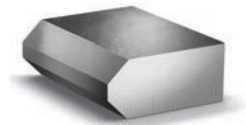
X-Bevel



V-Bevel Bottom



Y-Bevel Bottom



K-Bevel

SmartBevel™ Technology

Smart Bevel includes programming techniques and geometric compensations for a wide array of bevel types, including V, X, Y, and K bevels on mild steel from 1/4 in. to 2 in. thick.

Bevel Data Range*						
Thickness	Current (Amps)					
	100 A	130 A	200 A	260 A	360 A	450 A
0.250 in.	V, Y					
0.313 in.	V, Y	V, Y				
0.375 in.		V, Y, X				
0.500 in.		V, Y, X	V, Y, X			
0.625 in.			V, Y, X			
0.750 in.			V, Y, X, K	V, Y, X, K		
0.875 in.			V, Y, X, K	V, Y, X, K		
1.000 in.			V, Y, X, K	V, Y, X, K	V, Y, X, K	
1.250 in.			V, Y, X, K	V, Y, X, K	V, Y, X, K	V, Y, X, K
1.500 in.					V, Y, X, K	V, Y, X, K
1.750 in.						V, Y, X, K
2.000 in.						V, Y, X, K

*On mild steel.



ESAB / esab.com

